



558

增强酚醛树脂用短切原丝

Chopped Strands for Phenolic Resin

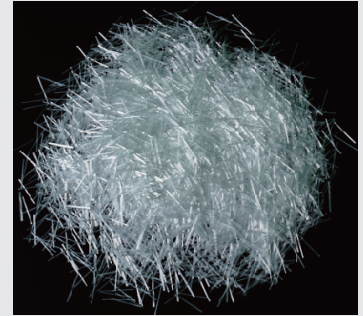
产品说明 Product Description

558 是增强酚醛树脂专用短切原丝，表面涂覆硅烷基浸润剂，具有良好的干态流动性和分散性。

558 适用的主要成型工艺是模压法，主要用于制造各种制动蹄衬片、离合器衬片、摩擦片等。

558 Chopped Strands are specifically designed to reinforce phenolic resin. They are coated with a silane-based sizing and have excellent dry flowability and strand dispersion.

558 are designed for use in the compression molding process to manufacture automobile brake shoe facings, clutch facings, and friction plates.



产品特点 Product Features

- ◎ 原丝集束性好、静电小
- ◎ 原丝毛羽少、流动性好
- ◎ 在树脂中快速分布均匀，工艺性能好
- ◎ 机械性能好
- Good strand integrity and low static
- Low fuzz and good flowability
- Fast and uniform distribution in resins and good processing properties
- Good mechanical properties

规格代号 Specification

玻璃类型 Glass type	E			
短切原丝 Chopped strands	CS			
典型纤维直径 Typical filament diameter (μm)	13			
典型短切长度 Typical chopped length (mm)	3	4.5	6	12
示例 Example	ECS13-03-558			

技术指标 Technical Parameters

项目 Item	纤维直径偏差 Filament diameter variation	含水率 Moisture content	可燃物含量 Sizing content	短切长度偏差 Chopped length variation	短切率 Choppability
单位 Unit	%	%	%	mm	%
检测方法 Test method	ISO 1888	ISO 3344	ISO 1887	Q/JS J0361	Q/JS J0362
巨石标准 Jushi standard	± 10	≤ 0.07	0.85 ± 0.15	± 1.00 (d ≤ 10mm) ± 1.50 (d > 10mm)	≥ 99.00
行业标准 JC/T 896 Industry standard	± 15	≤ 0.2	± 0.2	± 1.5	≥ 95

使用说明 Instructions

- ◎ 本产品可在12个月内使用最佳，使用前应保存在原包装内。
- ◎ 产品使用时注意防护，避免产品擦毛、损伤等情况。
- ◎ 使用前调理纱线的温湿度与环境温湿度平衡，使用时对环境温湿度进行适当控制。
- The product is best used within 12 months after production, and should be kept in the original package before use.
- Care should be taken when using the product to prevent it from being scratched or damaged.
- The temperature and humidity of the product should be conditioned to be close or equal to the ambient temperature and humidity before use, and the ambient temperature and humidity should be properly controlled during the use.



558

增强酚醛树脂用短切原丝 Chopped Strands for Phenolic Resins

包装信息 Packaging

采用集装袋包装、编织袋包装：

- 集装袋可装900kg~1200kg产品，标准定重1000kg。
- 编织袋可装15kg~30kg产品，标准定重25kg。

The product can be packed in container bags or woven bags:

- A container bag can hold 900kg~1200kg of products, with the standard weight being 1000kg.
- A woven bag can hold 15kg~30kg of products, with the standard weight being 25kg.

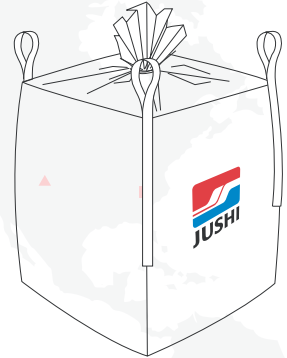
集装袋尺寸 Container bag size

长度 Length mm(in)	990 (38.98)
宽度 Width mm(in)	990 (38.98)
高度 Height mm(in)	1100 (43.31)

编织袋尺寸 Woven bag size

长度 Length mm(in)	850 (33.46)
宽度 Width mm(in)	500 (19.69)
高度 Height mm(in)	120 (4.72)

包装图片 Package picture



贮存 Storage

在没有特殊要求的情况下，玻璃纤维产品应贮存在干燥、阴凉的地方，防止受潮。最佳存储条件为温度 $-10^{\circ}\text{C} \sim 35^{\circ}\text{C}$ ，相对湿度 $\leq 80\%$ 。为确保安全，避免损坏产品，托盘的堆码高度不应超过三层。当堆放两层或三层高时，要求正确地、平稳地移动上面的托盘。

Unless otherwise specified, the fiberglass products should be stored in a dry, cool and moisture-proof area. The best temperature and humidity should be maintained at $-10^{\circ}\text{C} \sim 35^{\circ}\text{C}$ and $\leq 80\%$ respectively. To ensure safety and avoid damage to the product, the pallets should be stacked not more than three layers high. When the pallets are stacked in two or three layers, special care should be taken to correctly and smoothly move the upper pallet.

安徽天复新材料有限公司 ANHUI TIANFU NEW MATERIAL CO.,LTD

Copyright 2024 安徽天复新材料有限公司

Add: Room 1716,Lvdi Building,Qianshan Road,Zhengwu District,Hefei City,Anhui Province,China

Tel/WhatsApp/Skype:+86 13696771864

Email:sales@tfcomposite.com

Website:www.tfcomposite.com